



## District 10 Code Analysis - 11/30/2021

Data extracted for Code complaint cases opened between October 1st 2018 - September 30th 2019

### All Complaint Cases

Reported Complaint Type	Total	Commercial	Neighborhood	Multifamily
Land Use	1,225	42	1,061	122
Property Abatement	711	56	619	36
Structure Condition	489	196	151	142
Work Without Permit	105	8	89	8
SWS Chp 15	4	-	2	-
<b>Total</b>	<b>2,534</b>	<b>302</b>	<b>1,920</b>	<b>308</b>
<b>Total Percent of Citywide Complaints</b>	<b>7.0%</b>	<b>4.4%</b>	<b>8.6%</b>	<b>4.4%</b>

### Repeat Offender, Short Term Rental, and Rooming and Boarding Home Complaint Cases

\*Filtering complaint cases by complaints occurring at Repeat Offender Properties (ROP), Short Term Rentals (STR), or Rooming and Boarding Homes (RBH). Austin Code categorizes them as Operating Licenses types.

Case Code	Total	Commercial	Neighborhood	Multifamily
Repeat Offender Properties	83	3	-	80
Short Term Rentals	181	1	172	8
Rooming and Boarding Homes	2	-	1	1
<b>Total</b>	<b>266</b>	<b>4</b>	<b>173</b>	<b>89</b>
<b>Total Percent of Citywide Complaints</b>	<b>0.7%</b>	<b>0.1%</b>	<b>0.8%</b>	<b>1.3%</b>

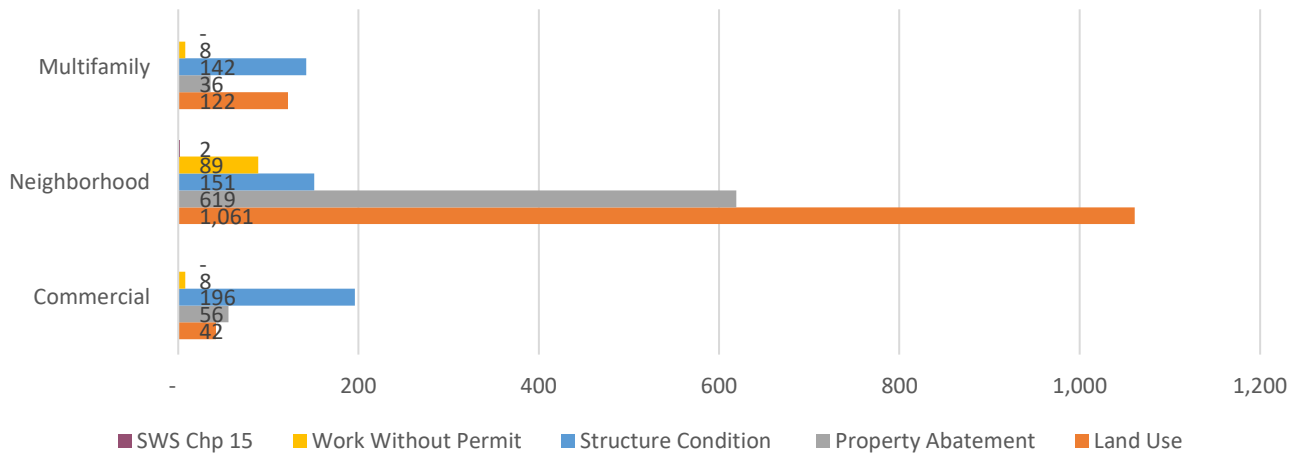
Reported Complaint Type	Total	ROP	STR	RBH
Land Use	1,225	1	181	1
Property Abatement	711	2	-	-
Structure Condition	489	80	-	1
Work Without Permit	105	-	-	-
SWS Chp 15	4	-	-	-
<b>Total</b>	<b>2,534</b>	<b>83</b>	<b>181</b>	<b>2</b>
<b>Total Percent of Citywide Complaints</b>	<b>7.0%</b>	<b>2.9%</b>	<b>6.5%</b>	<b>1.7%</b>

### Council District Matrix - All Complaint Cases

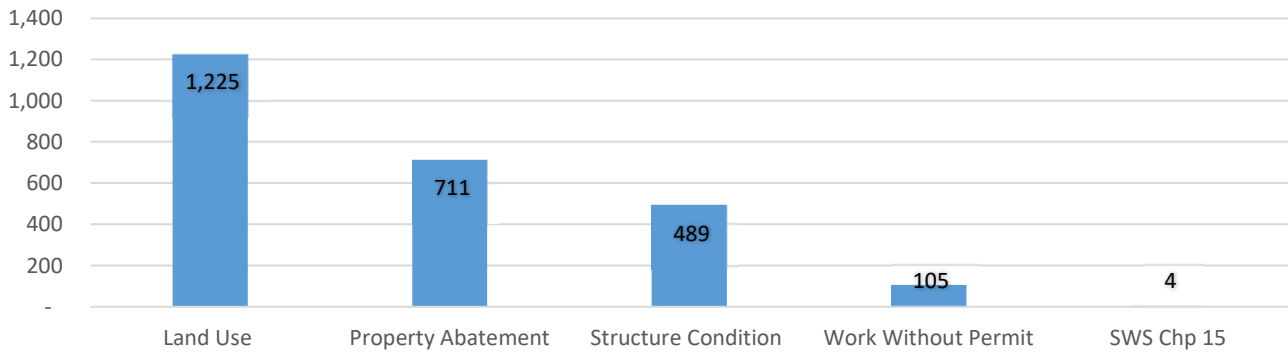
This matrix shows your Council District's percentage of total complaint cases in comparison with others.

Council District	% Total	% Commercial	% Neighborhood	% Multifamily
District 1	16.9%	11.1%	18.5%	17.7%
District 2	8.6%	10.1%	9.4%	4.4%
District 3	13.1%	18.1%	10.6%	16.2%
District 4	13.2%	9.7%	11.1%	23.4%
District 5	8.2%	4.8%	10.4%	4.3%
District 6	5.1%	4.1%	6.7%	1.1%
District 7	8.4%	11.5%	8.4%	5.4%
District 8	4.0%	1.5%	5.8%	0.9%
District 9	15.5%	24.8%	10.6%	22.2%
District 10	7.0%	4.4%	8.6%	4.4%

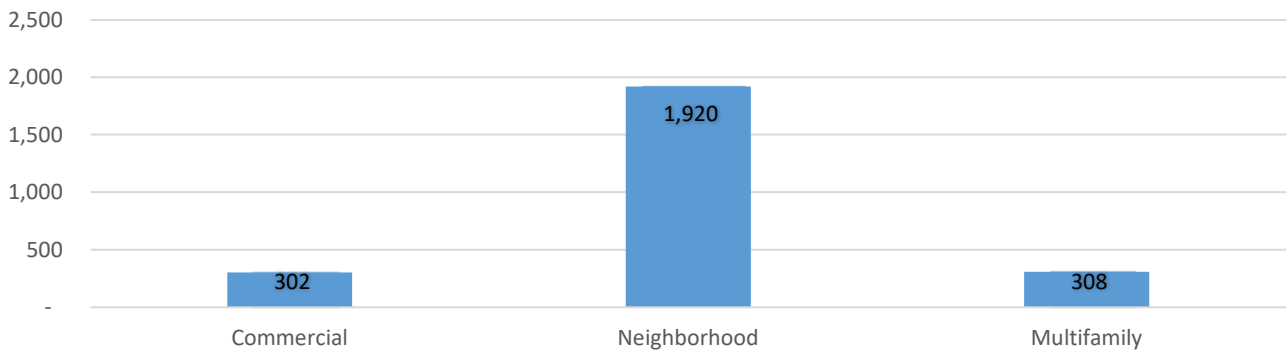
### Complaint Case Types by Zoning Designation



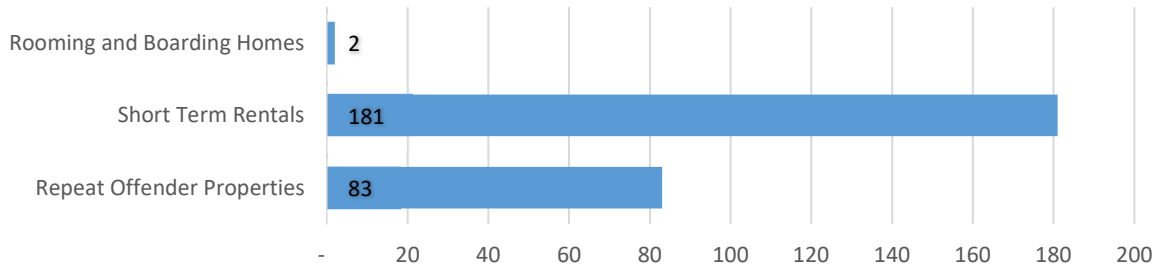
### Complaint Cases by Complaint Type



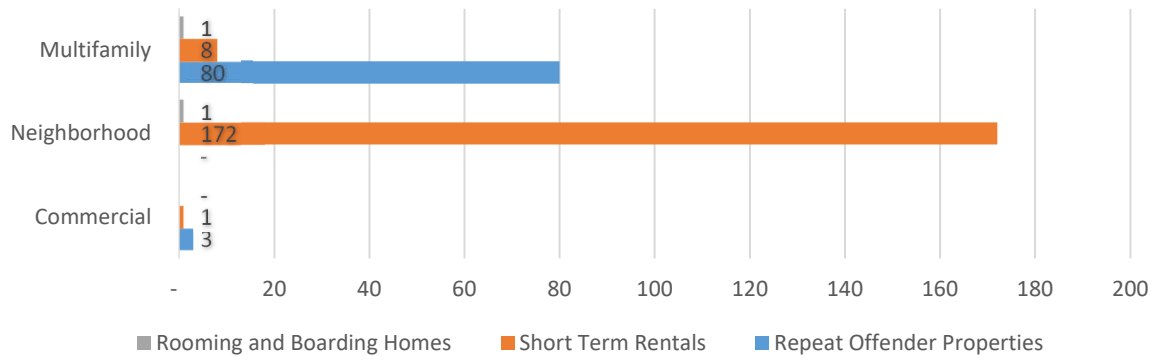
### Complaint Cases by Zoning Designation



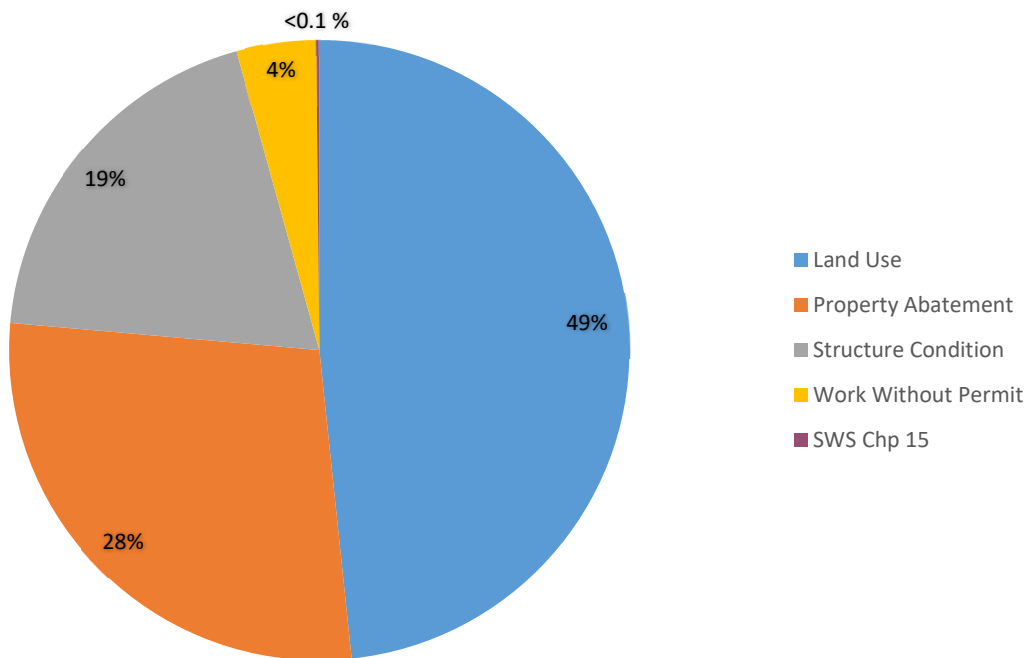
## Complaint Cases by Operating License Types



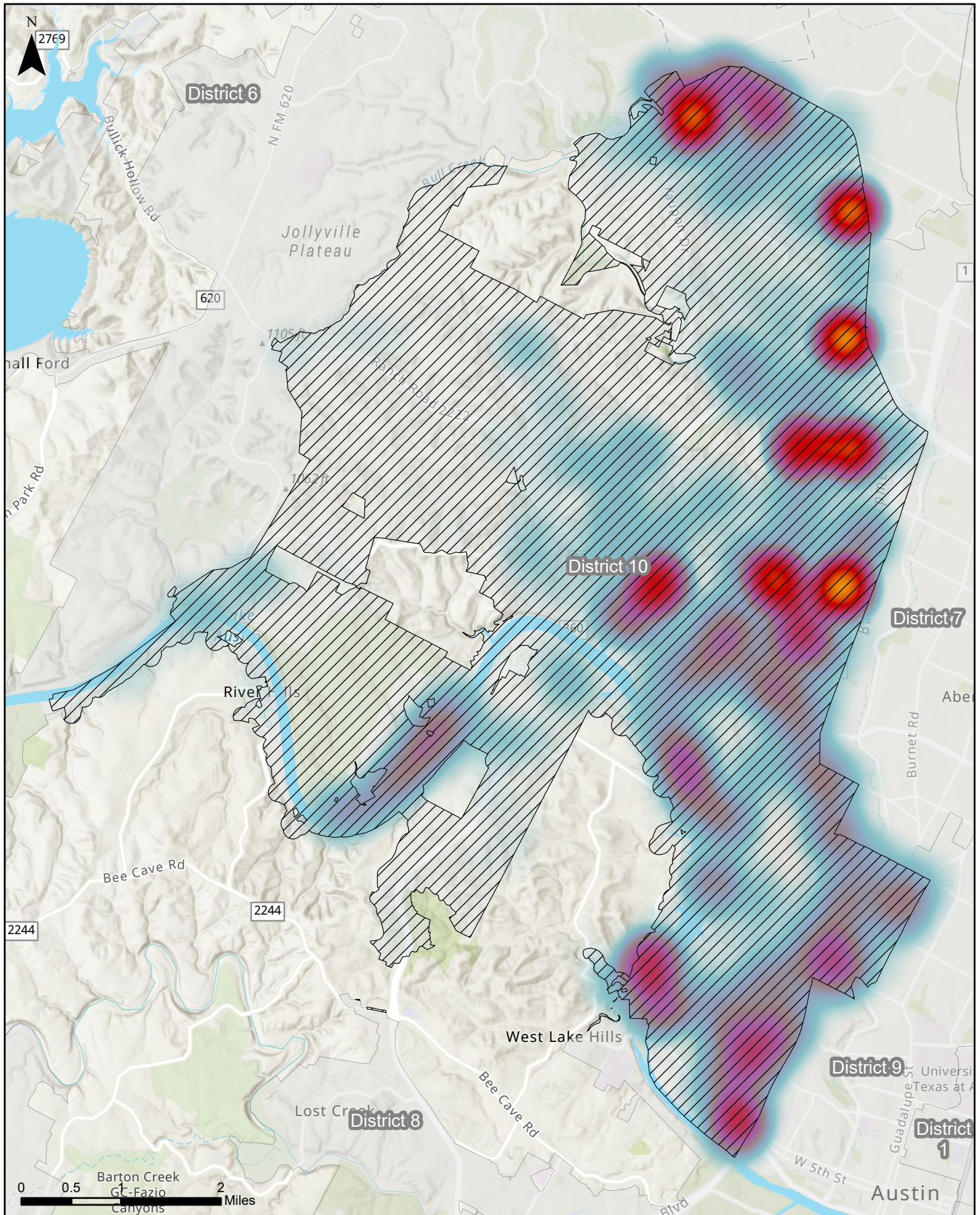
## Operating License Complaint Cases by Zoning Designation



## Operating License Complaint Case Types

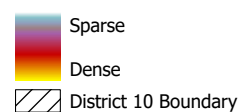


# Council District 10



This map examines the density of code cases opened in District 10 between October 1, 2018 and September 30, 2019. The total number of cases opened was 2,534

Sources: AMANDA Case Management Database; GIS DM 2021



**AUSTIN**CODE  
DEPARTMENT

Map generated on:  
11/12/2021